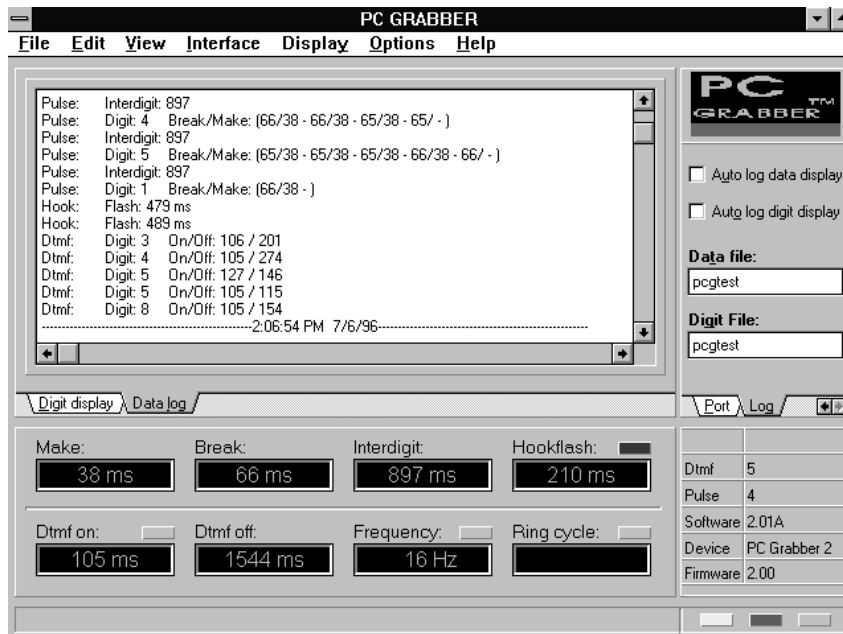


PC Grabber™

PC Based DTMF Decoder • Model 2



Innovative Communications
TSI Products



PC Grabber™
Model 2

PC Grabber™ • Model 2 Users Manual

Telsoft Inc. • 200 East 37th Street • Boise, Idaho 83714
Tel: 208-367-1399 • Fax: 208-367-0922 • Email: telsoft@telsoftinfo.com
Web Page: www.telsoftinfo.com

Table of Contents

GETTING STARTED.....	3
Important Information	3
Introduction.....	4
System Requirements	5
PC GRABBER™ HARDWARE	5
PC GRABBER™ SOFTWARE INSTALLATION	6
PC GRABBER™ MODEL 2 SOFTWARE OVERVIEW.....	6
Display Panel	7
Digit Display	7
Data Log	7
File Menu.....	7
Edit Menu	8
View Menu	8
Interface Menu	8
Display Menu.....	9
Options Menu.....	9
Help Menu	9
Log Panel.....	9
Enables Panel.....	10
PC GRABBER APPLICATIONS	10

Important Information

Warranty

Telsoft warrants its products against defects in materials and workmanship for a period of 90 days.

If you discover a defect, Telsoft Inc. will, at its option, repair, replace or refund the purchase price. You must contact us before shipping a return, as we must issue an RMA number for all repairs. After repairing or replacing your product, we will ship it back to you using the same method of shipment used to have the product delivered to Telsoft Inc. (for instance, if you ship your product via overnight express, we will return ship the same).

This warranty does not apply if the product has been modified or damaged by accident, abuse or misuse.

14 Day Money Back Guarantee

If, within 14 days of having received your product, you find that it does not suit your needs, you may return it for a refund. Telsoft will refund the purchase price, excluding shipping/handling costs. If the product has been altered or damaged, Telsoft reserves the right to waive the 14 day money back guarantee. This guarantee only applies to the product purchased from Telsoft Inc.

Copyrights and Trademarks

Copyright © 1995 Telsoft Inc. All rights reserved. **Telsoft**™, the Telsoft logo, and **PC GRABBER**™ are trademarks of Telsoft Inc. Other brand and product names are trademarks or registered trademarks of their respective holders.

Disclaimer of Liability

Telsoft Inc. is not responsible for special, incidental or consequential damages resulting from any breach of warranty or under any legal theory, including lost profits, downtime, goodwill, damage to or replacement of equipment or property.

Special Note about Reseller Sales

If you purchased your Telsoft product through a reseller, you need to contact the reseller if there is a problem.

Introduction

PC GRABBER™ Model 2

Thank you for purchasing the PC GRABBER™. At first glance, the pc grabber may seem fairly minimal - especially for its small size. But, with software that fully utilizes all available hardware, the pc grabber gives you useful and powerful features - without the cost of hardware. Its low cost and simplicity make the pc grabber a perfect tool for the telephony technician.

Features

- Displays dtmf digits dialed.
- Displays pulse digits dialed.
- Displays pulse make and break times.
- Displays dtmf on and off timing.
- Displays Interdigit timing.
- Displays tone frequency.
- Displays line status (on or off hook).
- Displays hook flash interval.

System Requirements

To operate the pc grabber **model 2**, you'll need the following computer system:

- IBM PC or compatible 386 or higher computer.
- 3.5 inch disk drive.
- Serial port.
- 1 meg ram.
- Microsoft windows 3.0 or above.

Power

The PC GRABBER™ Model 2 does not require any external power source. The PC Grabber is powered by the host computer serial port.

Packing List

If you purchased the pc grabber package, you should have received the following items: *If any items are missing please let us know.*

- PC GRABBER™ control unit.
- 3.5 inch diskette.
- Users manual (this manual).
- Telephone line test cable.

PC GRABBER™ Model 2 Hardware

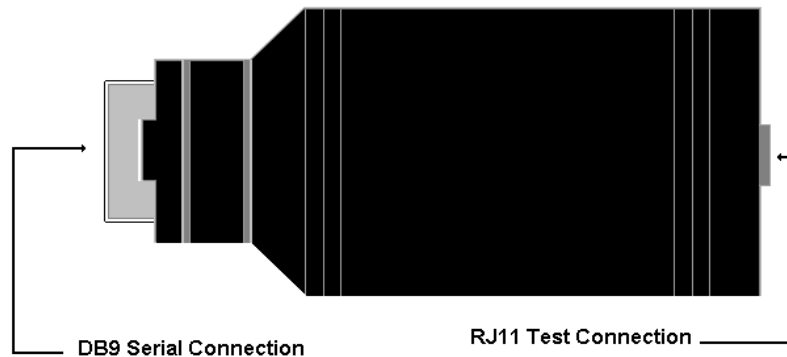
The PC GRABBER Model 2 is a compact software driven telephony test unit. It has 2 external connections as described below.

Connections

- DB9 serial port for connection to host computer.
- RJ11 connector for connection to the telephone line.

Warning

Do not attempt to connect hazardous voltages to the pc grabber inputs, this may cause harmful effects to the user, computer and pc grabber. The pc grabber was designed for connection to the telephone line only.



Software Installation

Software Installation PC GRABBER Model 2

- 1) Insert the disk labeled *Disk 1* in the appropriate disk drive.
- 2) Open the file manager and view contents of disk 1.
- 3) Run the *SETUP.EXE* file by double-clicking on it with the mouse, or by selecting it and pressing *ENTER*.
- 4) To run *PC GRABBER 2* type *PCGRAB2* from windows command line or double click on the *PC GRABBER 2* icon.

If you have any problems installing pc grabber software please call TelSoft for technical support.

PC GRABBER™ model 2 software overview

1. Display Panel

Hook Flash display

Displays the hook flash interval detected. The light panel next to the hook flash display indicates hook status (Red indicates an off hook condition).

Frequency display

Displays the frequency detected from the telephone line. The light panel next to the frequency display indicates that frequency is valid (Red state).

Dtmf On display

Displays the length of time the dtmf tone was on. The light panel next to the dtmf on display indicates that a dtmf tone is being detected when the light is red.

Dtmf Off display

Displays the amount of time elapsed between dtmf tones.

Interdigit display

Displays the amount of time elapsed between detection of valid pulse digit.

Break display

Displays the amount of time that pulse dialing is in the break state.

Make display

Displays the amount of time that pulse dialing is in the make state.

Ring Cycle display

Displays ring frequency(HZ).

2. Digit Display

This window records all digits detected (pulse and dtmf digits) similar to the hand held dtmf analyzers LCD display.

3. Data log

This window records hookflash timing, dtmf digits and dtmf on and off time, pulse digits and make and break timing, incoming ring frequency.

4. File Menu

New

Creates a new data log or digit display file.

Open

Opens an existing data log or digit file.

Save

Saves data log or digit display file to disk.

Save As

Saves an existing data log or digit file by the name and path you specify.

Print

Prints the contents of the data log or digit display window.

5. Edit menu

Cut

Cuts selected text from data log or digit display window to the windows clipboard.

Copy

Copy selected text from data log or digit display window to the windows clipboard.

Paste

Paste data from the windows clipboard to the data log or digit display window.

Delete

Deletes selected text in the data log or digit display window.

Select All

Selects all text in data log or digit display window.

6. View Menu

Full View

Displays entire PC GRABBER™ user interface.

Small View

Displays only data log and digit display windows.

7. Interface Menu

Serial Port

Select the serial port that the PC GRABBER™ hardware is installed on. Serial ports 1,2,3,4 are valid selections. The serial port can also be selected from the port panel located at the right hand of the screen.

Reset Device

This resets the PC GRABBER™ hardware. Select this if the hardware is not communicating with the software.

8. Display Menu

Clear Digit Display

Clears the contents of the digit display window.

Clear Data Log Display

Clears the contents of the data log display window.

Clear Display Panel

Clears all the display panel screens.

9. Options Menu

Beep On Detect

When this option is selected the computer will beep when a dtmf digit is detected.

New Line Timer

When this option is selected a new line will be started in the digit window followed by a time and date stamp. Also a time and date stamp will be added to the data log window.

Detect Transitions Under 20ms

When this option is selected transitions under 20ms will be logged into the data log as pulse digits. If it is not selected 20ms transitions will be ignored.

10. Help Menu

About

Displays TelSoft inc. Trademark and Copyright information.

11. Log Panel

Auto Log Data Display

When this feature is selected the text in the data log window will be saved every 30 seconds to the file indicated in “data file”.

Auto Log Digit Display

When this feature is selected the text in the digit display window will be saved every 30 seconds to the file indicated in “digit file”.

Data File

File to save data log to automatically. (Auto log data display must be enabled)

Digit File

File to save digit display to automatically. (Auto log digit display must be enabled)

12. Enables Panel

Log DTMF Data

When this feature is selected DTMF data is logged into the data log display.

Log Pulse Data

When this feature is selected Pulse data is logged into the data log display.

Log Flash Data

When this feature is selected Flash Hook data is logged into the data log display.

Log Ring Data

When this feature is selected Incoming Ring data is logged into the data log display.

Display DTMF

When this feature is selected DTMF digits are displayed in the digit display window.

Display Pulse

When this feature is selected Pulse digits are displayed in the digit display window.

PC GRABBER™ Applications

- Testing auto dialers.**
- Dtmf and pulse digit verification.**
- Speed dialer testing and programming.**
- Direct inward dial line testing.**
- Phone System testing.**
- Call detail recording.**
- Voice mail testing.**
- Alarm system testing.**

If you have other application ideas we would like to here from you

Thank You, TelSoft Inc.